

**ANNUAL FARM & CONSTRUCTION EQUIPMENT AUCTION**

**ONE DAY ONLY!**  
**Sat., May 18, 2019**  
**8 A.M.**

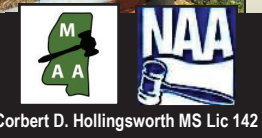
**CHECK OUR WEBSITE FOR LISTING & MORE DETAILS!**



**100+ TRUCK TIRES, PARTS, & TOOLS!**



[www.HollingsworthAuctions.com](http://www.HollingsworthAuctions.com)  
**(601)469-2705/(601)954-4230**



**Enterprises, Inc.**  
 2749 Hwy. 21 \* Forest, MS 39074  
[www.HollingsworthAuctions.com](http://www.HollingsworthAuctions.com)

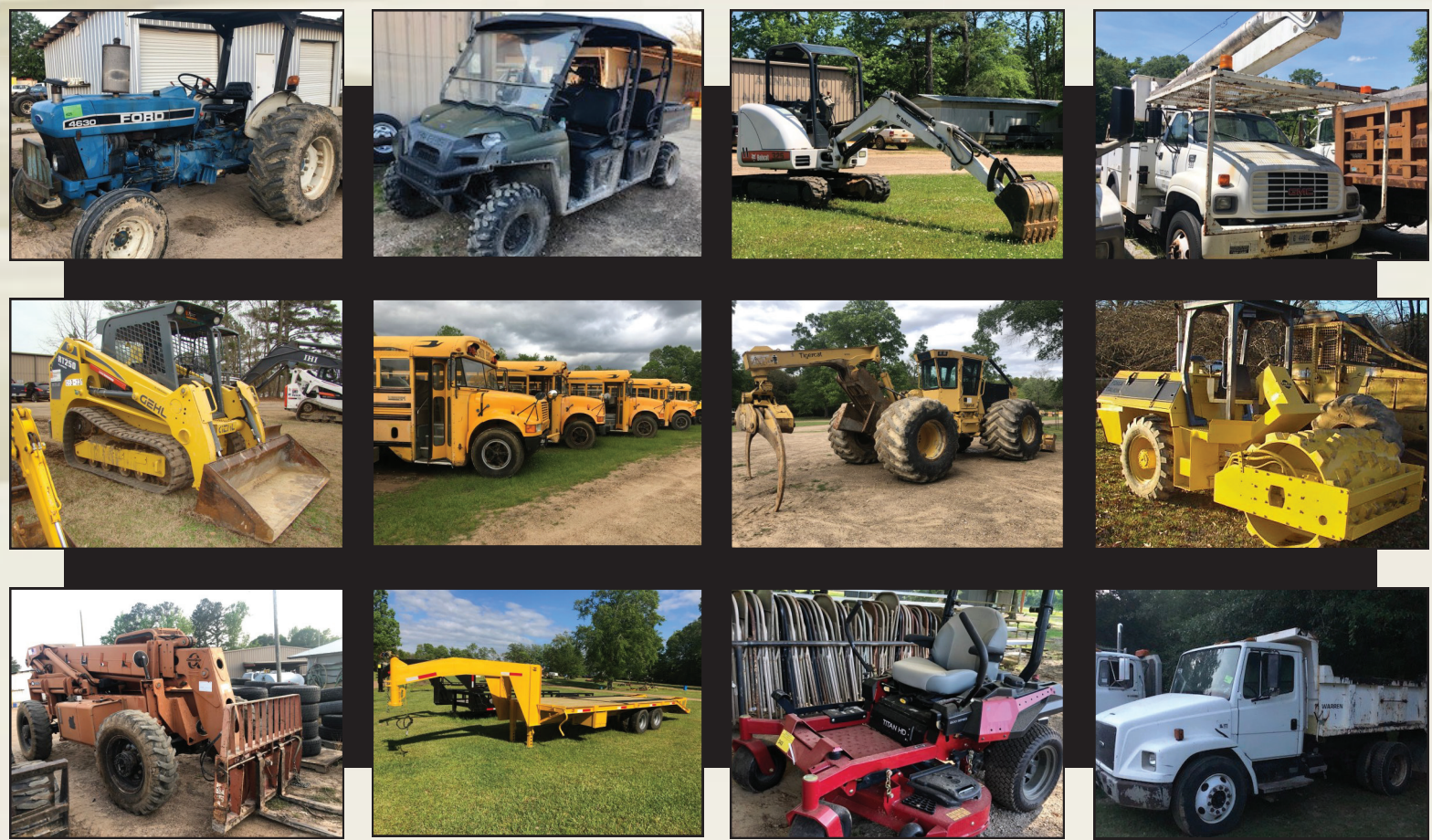
**FARM AND CONSTRUCTION EQUIPMENT AUCTION**  
**SATURDAY, MAY 18, 2019**  
**8 AM \* FOREST, MS**

*RETURN SERVICE REQUESTED*

PRSR STD  
 U.S. Postage  
**PAID**  
 ALPHAGRAPHS



**ACCEPTING CONSIGNMENTS NOW!**



**MULTIPLE PROPERTY REAL ESTATE AUCTION**

**May 16—May 30**

**\*ONLINE ONLY\* [www.CWAuctionsAndRealty.com](http://www.CWAuctionsAndRealty.com)**

- The Party House/The Glass Co. Retail Business, Forest, MS
- Commercial & Residential Land, Hwy 80, Forest, MS
- Industrial Property, Corner of Hwy 80/Hwy 35, Forest, MS
- Subdivision Housing Lots, Magnolia Heights Blvd., Forest, MS
- Commercial Property, Cagle St., Louisville, MS
- AND MORE!**

[www.CWAuctionsandRealty.com](http://www.CWAuctionsandRealty.com)

**601-564-8414**  
**Courtney Jo Weaver, Broker/Auctioneer**

10% Buyer's Premium. Subject to reserve. Check website for complete terms and conditions. Lic# B-20584 / A-1296

