

*AVAILABLE ON RING 1 ONLY



ANNUAL EQUIPMENT AUCTION

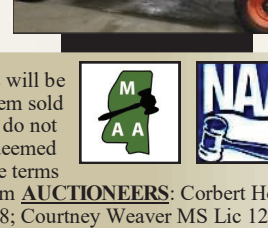
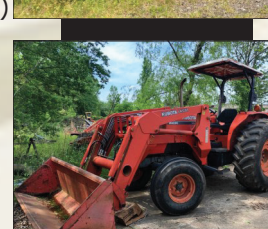
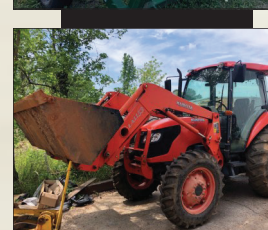
Saturday, May 18, 2019, 8:00 A.M. * www.HollingsworthAuctions.com

Hollingsworth Enterprises, Inc. * Forest, MS * (601) 469-2705

LOCATION/DIRECTIONS: 3 Miles North of Forest on Hwy 21 * Watch for Signs * Auction Held Rain or Shine

This is a Partial Listing Only!
Check our website for online bidding updates!
www.HollingsworthAuctions.com

Consignments
Welcome!



RING 1: 8:00 AM

CONSTRUCTION & LOGGING EQUIP'T

Dozers, Excavators, Backhoes
530 Timberjack Knuckleboom Log Loader
160 Barko Knuckleboom Log Loader
(2) 525 Caterpillar Log Skidders
620D Tiger Cat Log Skidder
670-A John Deere Motor Grader, 2681 hrs
EC210 Volvo Excavator, 3400 hrs (New Eng)
D3G Caterpillar Dozer, 3652 hrs
PD66A Galion Vibratory Roller Packer
325 Bobcat Mini Excavator, 2616 hrs
580 Case Super K 4x4 Backhoe

Aerial Equipment

Harnishfeger P & H T400XL Crane Tk w/
40 Ton/120' Crane/Jib, 23,126 mi

Loaders

844C-42 Lull Telescoping Forklift
1044C-54 Series II JLG Telescoping Forklift
(Weak Eng)
RT 250 Gehl Turbo Track Loader, 900 Hrs
TL130 Takeuchi SkidSteer, 800 hrs
(Steering Issues)

Forklifts

(2) Pro G30 TCM 6K# Forklift, Pneum Tires,
148" lift, 5500 hrs
42-6FGCU25 Toyota LP, 5500# Cap, 80" lift
Nissan 15LP 3K#, 2 Stage Mast, Pneum Tires
C25E Daewoo, 4450# Cap, 234" Ht

FARM TRACTORS- Expecting 50+

6400 John Deere 4x4 w/ FE Ldr, Cab AC,
Forestry Pkg, Grapple
M6800 Kubota 4x4 w/ FE Ldr, Bkt & Spear
6600 Ford
M8200 Kubota w/ LA1251 FE Ldr, Canopy,
2129 hrs
M7040 Kubota 4x4 w/ Cab/AC, LA1153
FE Ldr, 1745 hrs (1 Owner) PENDING
4700 Kubota
M6950 Kubota, Forestry Canopy, 3528 hrs
TN75A New Holland 4x4, w/ Rhino 4211
FE Ldr/Bkt, Synchro Comd, Shuttle Shift
4630 Ford
2355 John Deere w/ FE Ldr, Canopy
2000 Ford, gas, 2300 hrs
593 Massey Ferguson, Cab/AC w/ 6' Wing
Alamo Frail Mower & 8' Rear Frail Mower
L2002CT Kubota 4X4, 1725 hrs

HEAVY TRUCKS

'02 Sterling Super E w/ Goliath Trash
Compactor Bed 178,461 mi
'02 International 4300 DT466 Dry Box Van,
172K mi
'00 Freightliner Day Cab TK-TR w/ Warren
Dump, Cummins, AT, Air Brakes, 97K mi
'98 GMC C7500 Bucket Truck w/ 43'
Altec Boom, 600#, 57,130 mi
'98 MCI 102-EL3 56 Pass Motorcoach
'96 International 4700 Bucket Truck
w/ 48' HiRanger Boom
'96 Volvo Truck Tractor Dsl w/ Sleeper Cab,
Cummins Eng, Fuller Trans, 275,631 mi
'94 Ford L9000 Dsl, 101,340 mi
'90 Ford F800 240 Dsl w/ 7 Yd Dump, 5 Sp,
Air Brakes, Pwr Steering, New Floor
'90 Ford F800 Dsl Crane Tk w/ Titman Hydra

35' 9500# Lift Boom, 42,728
mi
'89 Ford L8000 Dsl
'89 Brigadier GMC Tri-Axle w/
Heil Dump,
Fuller Trans, Cummins Eng,
584K mi.
'85 GMC 7500 Flatbed, 8.2 Det,
Allison Trans
'84 Freightliner Tri-axle w/ 14 yd
Dump Bed, Cat Eng, 13 sp
'82 Mack R-Model Trk Tktr 5th
Wheel (Cty Owned)

SALVAGE/NOT RUNNING

170 Franklin Log Skidder (Burnt
Cab, Eng Works, New Trans)
'93 GMC Topkick Single Axle Tk
w/ Warren Dump Bed
(5) '91-'94 International Blue Bird
School Buses
750S John Deere tractor
(turns over, no compression)

TRAILERS

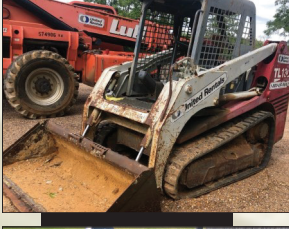
'16 24' Scottsman GN, Tandem
Axle, Lo Pro, Pipe Rails, 14K#
'07 Walley Mo 5th Whl 6-Car Hlr
'02 KRAFTSMAN 3 Axle 4-Car
Hauler GN, 21K#
'99 Walley Mo 5th Whl 6-Car Hlr
'98 Kaufman Pro Series EZ
Loader Car Hauler
'79 42'x8' Shop Built Lowboy,
35T, Spring-Assist Ramps
8' x 25' Homemade GN w/ Dove
tail & Ramps, Air Brakes
(2) 4- Bolster Log Trailers
(2) 48'-53' Dry Vans
53' Reefer Trailer
3-Axle Pintle Hitch Tag-A-Long

AUTOS- Expecting 75+

'10 Ford F150
'07 Chevrolet 2500 HD 4x4 Crew
Cab, Duramax, 127K mi
'05 Dodge Power Wagon 4x4
Crew Cab, Hemi 5.7, 139K mi
'04 Chevrolet 2500 HD w/
Flatbed, 213K mi
'04 Toyota Tacoma, Security Lt,
184K mi
'02 F150 Triton V8, 348K mi
'00 Chevrolet Silverado 2500
'99 Ford Crown Victoria
'84 Chevrolet Blazer, custom
open-top, 27,860 mi

ATTACHMENTS

Skid Steer Post Hole Digger
6' Hydraulic Brush Cutter
Root Rake Grapples
72" Hyd Sweeper
48" Pallet Forks
Buckets
Bucket Grapples
Hay Spears
Quick Attach Plates



**CONSIGNMENT
DEADLINES:**

*Internet Participation:

Tues., May 14, 5 p.m.

*Live-Only:

Wed., May 15, 5 p.m.



ATVs/RTVs/UTVs- 20+

'14 Bobcat 3400XL Crew Cab
UTV, Yanmar Dsl Eng
'14 Polaris Ranger 800 EFI Crew
Cab UTV
Golf Carts All Makes
Club Car 3- Seat Gas Cart
Club Car elect Golf Cart

CAMPERS/MOBILE HOMES

'12 New River #2 2 BR/1 BA 12'x40'
Mobile home (NICE, NEW, Old
Stock, NO TITLE)

RING 2: 8:15 AM

FIELD & FARM EQUIPMENT

1600 Rain flow Ride-On Transplanter,
Series II
Buhler Allied S595 FELdr w/ Bkt &
Brackets
8' Super Grader Bionic Blade
8' Dirt Dragon Pull-type box blade
Tuffline TW52 12' Disk
20' V-Ripper Parabolic Subsoiler
20' Triple K Field Cultivator
3715 15' Batwing Bushhog Cutter
(2) 12' Bushhog Cutters
20+ Cutters, All Sizes
John Deere 2759 Cutter
Finish Mowers
Swisher 72" Pull-Type Mower, 13 HP,
Self-Contained
S&N 200 Gal Sprayer w/ Hand Wand
3pt Hitch Disks
Hippers
Rollers
Cultivators
Tillers
5' 6' & 7' Bionic Blades
Box Blades
Posthole Diggers
Landscape Rakes
Spreader Buggy
Section Harrows
Seeders
Hay Equipment
8, 9, 10 ft Kuhn Hay Cutters
8' Kuhn PZ170 Hay Cutter (NICE)
'12 John Deere 458 Baler w/ monitor
John Deere 385 Baler
KR151 Krone Neimeyer Baler
Hay Rakes
8-Reel High Speed Hay Ray
Zeigler 3 Pt Hitch 2-Row Fluffer/Rake
3pt Hitch Hay Forks
Farmhand Hay/Corn/Silage Grinder
w/ Conveyer, PTO driven

INDUSTRIAL MISC

(2) 20' Shipping Containers
53' Dry Box Container
Cable Spools
Rock Crusher/Pulverizer
Pallet Rack Legs/Cross Members
Buckets
5' x 28' tank, Appx 6k gal
5' x 18' tank, Appx 4k ga
12, 15, 20in x 20' Culverts
Lincoln Elect Ranger 250 Welder
Generators
Stairs
Metal
Steel

BOATS

Appx 10 Fishing Boats
Sylvan Elite Pontoon Boat, 60 HP
Mercury Four Stroke EFI Eng & Tlr
(3+) Alum Fishing Boats

UTILITY TRAILERS (20+ Some New)

(2) '19 Topline 6'8" x 18" 7K#
(2) '19 6'4 x 12 Topline w/ Dbl Gate,
(2) 7x16 Enclosed Trailers
'18 Scottsman 20' Bumper Pull HD
Equipment Tlr w/ Ramps, 12K#
'18 Topline 6'4"x16", 7k#, Ramps
'18 Scottsman 6x10 w/ Gate, 3K#
'18 Topline 5x12 w/ Gate, 3500#
'18 Topline 5x10 w/ Gate, 3500#
'18 Topline 5x8 w/ Gate, 3500#
Cattle Trailers
Stehl Tow Car Tow Dolly (New)

SALVAGE AUTOS

Expecting 10-15 Salvage/Not Running
'02 Dodge Ram 2500 V8 (Bad Trans)
'17 Dodge Charger Police Ed. (Wrecked)
10+ Salvage or Not Running ATVs,
Mowers, Golf Carts

MISCELLANEOUS

100+ Misc Truck & Tractor Tires, Parts,
& Tools
Ratchet Straps
Gates/Cattle Panels (New/Used)
Battery Testers
Hydraulic Oil
Drive Shafts
Shop Tables
Shop Equipment/Tools
Assorted Shop Compressors
Pressure Washers
Generators
Misc Lawn Mowers
Misc Steel/Alum
Assorted Pipe

TERMS/CONDITIONS: Complete payment due day of sale * Bank Letter of Credit must accompany all checks * Sales Tax and Title fees will be collected where applicable * Buyer's Premium: Onsite-10% with a \$250 max per item. Online terms differ, see terms upon registration * Every item sold AS IS - WHERE IS without warranty or guarantee of any kind, express or implied * Although every item is presently committed to this sale, we do not assume responsibility for any items that may be withdrawn due to circumstances beyond our control * All information was obtained by sources deemed correct but it is not guaranteed by Hollingsworth Enterprises, Inc. * All announcements made day of sale supersede any printed material. *Online terms may differ. **AUCTION CONDUCTED BY:** Hollingsworth Enterprises, Inc., 2749 Hwy 21, Forest, MS 39074 * www.HollingsworthAuctions.com **AUCTIONEERS:** Corbert Hollingsworth MS Lic. 142; Joey McCann MS Lic 157; Chad Brantley MS Lic 823, Henry Redmond MS Lic 1180, Brett Hollingsworth MS Lic 1298; Courtney Weaver MS Lic 1296.

